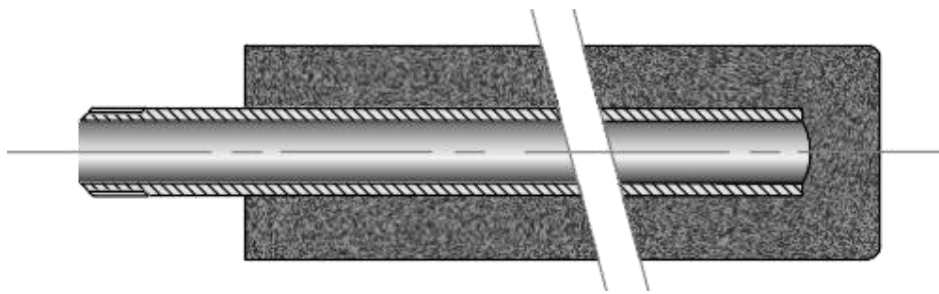


## SILICON CARBIDE THERMOCOUPLE PROTECTION TUBES

<b>Material:</b>	SiC with steel inner tube
<b>Application:</b>	Aluminium, Brass
<b>Temperature Shock:</b>	The high Graphite and Silicon Carbide content (circa 90%) give the thermocouple protection tubes very high thermal shock resistance which allows repeated immersion into molten aluminium without risk of cracking
<b>Max. Temperature:</b>	up to 1000°C
<b>Connection:</b>	standard 1/2" / 16 mm BSP outside thread (2.-series, e.g. CERT-248) also available with 3/4" / 21 mm BSP outside thread (3.-series, e.g. CERT-348)
<b>Type:</b>	CERT-2(+length in inch) CERT-3(+length in inch)



**Safety and Best Practice:** TPTs from any source should never be immersed in molten aluminium or other metals unless they have been previously dried at above 100° C to remove any water that may have been accidentally spilled on them. This is also applicable to other fluids such as oil, suspending liquids for wash coatings etc. In the latter case the tubes must be heated to a temperature sufficient to remove them. It is considered best practice to keep the thermocouples in a warm dry storage area. Our SiC tubes do NOT require additional coating.

### Various standard types:

TYPE	LENGTH	LENGTH
CERT-212 / -312	12 "	305 mm
CERT-218 / -318	18 "	460 mm
CERT-220 / -320	20 "	508 mm
CERT-222 / -322	22 "	559 mm
CERT-224 / -324	24 "	610 mm
CERT-230 / -330	30 "	760 mm
CERT-236 / -336	36 "	915 mm
CERT-242 / -342	42 "	1065 mm
CERT-248 / -348	48 "	1220 mm
CERT-254 / -354	54 "	1370 mm
CERT-367	67"	1700 mm
CERT-M70		700 mm
CERT-M80		800 mm
CERT-M1000		1000 mm